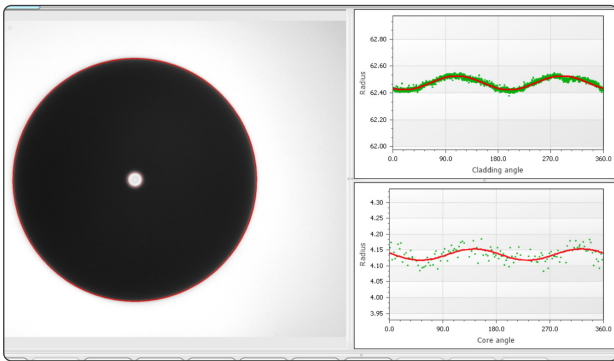




FG500

FG SYSTEMS



The FG500 is a Fiber Geometry system that measures the physical dimensions of the fiber including core, cladding, coating diameter, non-circularity, and eccentricity. The FG500 is designed to produce accurate measurements quickly and with confidence.

FEATURES & BENEFITS

- **High resolution optics** – Accurate calculation of fiber dimensions.
- **Applicable to most fiber types** – Standard, NDS, NZDS, DC, bend-insensitive and multi-mode variants fibers.

OVERVIEW

Measurement of Fiber and Coating Geometry is a process-critical activity that needs to be accurate, reproducible, and traceable. PFO has designed the FG500 to take advantage of the latest technology in optics to give the highest resolution possible in a user-friendly solution.

Calibration of the FG500 follows IEC guidance and utilises calibration artefacts supplied and or traceable to the UK National Physical Laboratory (NPL).

VARIANTS

The FG500 system allows flexible configuration where the end user may choose either a complete solution or a reduced capability for either coating only or fiber only.

STANDARDS

IEC-60793-1-20, IEC-60793-1-21, ITU G650.1

PE.fiberoptics Ltd

Rosa House
Mulberry Business Park
Wokingham
Berkshire RG41 2CY
United Kingdom